

Rhug[®]



Titan Urushi

Think “Ethical Business” in public facilities or private offices ～ comfortable space ～

For *Urushi* lacquering, wood has been mainly prepared as the base material though the risk of cracking and warping. A collaboration of *Urushi* and titanium is introduced here with the same hand-work of craftsmen in *Wajima*.

In contrast to wood:

- Lightweight
- More durable in overseas shipping
- Resistant to acid and alkali

In addition to the properties above, *Urushi* application retains the low thermal conductivity of titanium, and gives the tactile feel of wood.

Titan Urushi, Roiro Black

After the titanium surface is polished, *Roiro* black *Urushi* is applied by the hand-work of *Wajima* craftsmen.

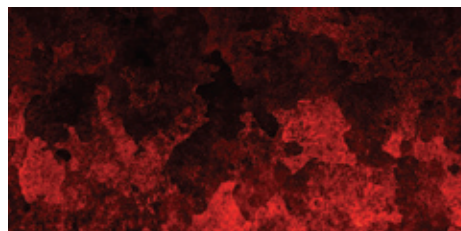
- Applying *Urushi* to a flat, smooth surface further enhances the aesthetic quality of the color black.
- Highly reflective surface expands the space.



Titan Urushi, Byakudan-nuri Technique

Byakudan-nuri is a technique of applying translucent *Urushi* lacquer over gold or silver foil. Here *Urushi* is applied on crystallized titanium.

- Takes 3 to 7 years for its pattern to emerge.



Titan Maki-e

Maki-e decoration using titanium powder in place of gold and silver powder.

- Golden *Maki-e* without using real gold. Reduces costs on larger scale.
- Wider expressions by various gradation and hue variation of the color gold.
- Realizing the technique of *Maki-e* in bigger frame, still retaining traditional technique of raised, flat and ground *Maki-e* through its refined perfection.
- Greater dimensionality compared to traditional *Maki-e*.
- Antique-look can be applied by the coloring of titanium even after the *Maki-e* is set.



After installation
The reception area in UEX, Ltd.
Titan *Maki-e* "Iris Flowers"

Urushi - One of the most durable natural lacquers favored in Japan for almost 9000 years. Excellent as coating, and most often used on wooden base, from household necessities to precious properties.

Maki-e - Decoration for *Urushi* lacquerware, made by sprinkling gold or silver powder into wet surface, followed by sanding and polishing process.

Urushi lacquer has long been used to convey the essences of power, religion and family traditions. The artistry, perfected through the centuries, is now joined by modern design and is used to convey high ideals embodied by various interior spaces.

Titan *Maki-e* patent pending

On February 26, 2009, project for "Development of products utilizing *Wajima* lacquering technique on base materials such as titanium and glass" was approved as the "Plan to Revitalize Regional Industry Resources" by METI (Ministry of Economy, Trade and Industry)

Manufacturing

Duco Co., Ltd. 2-29-22 Higashi Tamagawa Gakuen, Machida, Tokyo 194-0042 Japan
Phone: +81-42-724-6623 <http://www.duco.co.jp>

Inquiries

Rhms Project

E-mail : mitsuko-okabe@jcom.home.ne.jp
nadesycco@duco.co.jp